

On The Disk...

A run-down of what's included on the free disk with this issue

Subscribers to *The Delphi Magazine* receive a free disk with each copy, packed with goodies. This includes the source code and example files for all the articles in the current issue.

But, there's much more too! We've sifted through a great many tools, components and other Delphi add-ons to bring you some of the best shareware and freeware material available...

➤ EDSSPELL

A shareware spell checker packaged as a DLL with a supremely easy to use Delphi component interface. To check a memo (or any relevant Delphi component) you just drop the speller component on the form, add a "Spell check" menu item or button, then add 2 lines of code to, say, a menu-click or button-click event handler. Hey presto!

A US English dictionary is included, a Spanish one is available on registering and British English, French and German dictionaries are promised soon. Some handy freeware utility components are included too. From Eminent Domain Software.

➤ EQSHARE

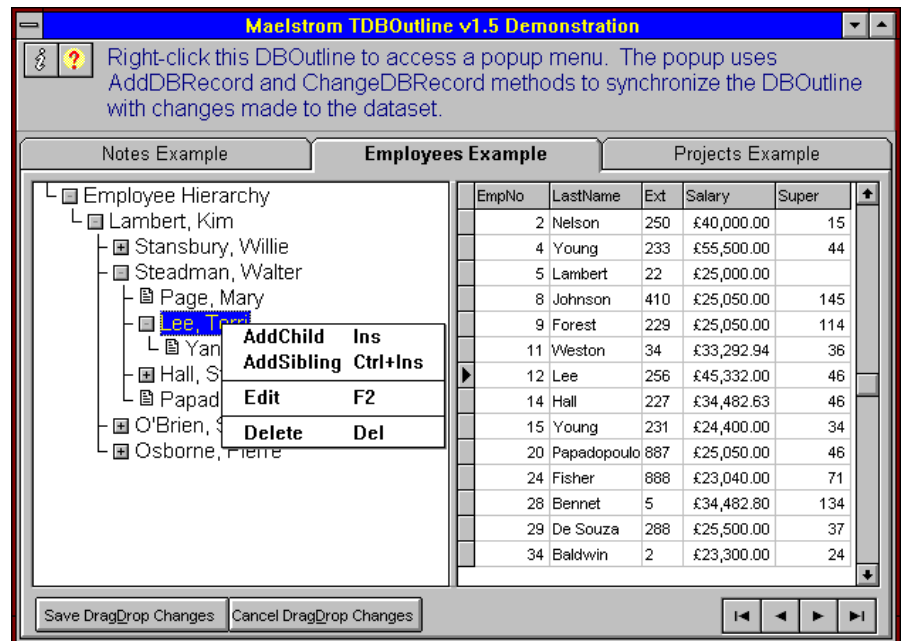
TEquation is a shareware component allowing a user to enter a mathematical expression with up to 26 variables and then compute the result of the expression. Supports the usual arithmetic and trigonometric operators plus power, square, factorial, pi, e, etc. Written by Mike Presley.

➤ FILTER

Allows your users to set or remove filters from a table by means of a simple dialog box. By Craig Ward.

➤ GREPENG

Freeware Delphi component encapsulation of the REGEXP.DLL regular expression ("GREP") text file search engine which shipped with Borland Pascal 7.01, from Paul Warren. the DLL is *not* included.



➤ Demo of TDBOutline from Maelstrom Software

➤ HOWTO

Contents listing of the Waite Group's 'Delphi How-To' book which is reviewed by Steve Troxell in this issue.

➤ INTERNET

Listing of Delphi-related World Wide Web and ftp sites.

➤ LASTIC

From reader A Simpson at Lastic Ltd. The LasGrid grid control extends the basic TStringGrid to provide column justification (left, right and centre), insert and delete row methods and row and column selection when clicking on a fixed cell. The LasSelect control extends the TPanel control enabling click events via the mouse and using the spacebar – very useful for displaying read only text where you do not want the display to show the cursor as for a TEdit control, while enabling the user to click on the control for further action.

➤ MAKEDBF

DbfMake, from Charlotte Gamsu, is a code generator. Given an existing DBF file it generates source code for a unit which (when included in your project) will create an empty

DBF table file and index file at run time.

➤ MDBOUTLN

TDBOutline (see the screenshot above) is a component designed to allow the loading, navigation, and manipulation of hierarchically organized data contained in a database. It's a descendant of TOutline, inheriting all TOutline's properties, methods and events, but it displays information from database files! From Maelstrom Software.

➤ MULTLANG

TMultLang from Patrik Wang enables you to include multiple language support in your Delphi applications, without writing any extra code. "Just drop it on your form and compile, finished" says the author! This component will change the properties of controls on forms in Delphi, at both design and runtime.

➤ PPANEL

Power Panel components by John Panagia: a collection of 19 visual components based on Delphi's own TCustomPanel, which give your application a very flexible means of resizing or moving virtually any

component at runtime. Includes sizable versions of many of Delphi's standard components.

➤ **RTDC**

RtDbCopy: this is a replacement for Delphi's TBatchMove (for copying data from/to tables) from Tomasz Stanczak which provides improved functionality and greater safety.

➤ **RTGI**

RtDbGenID from Tomasz Stanczak is a non-visual component which implements a unique number generator which allows you to generate truly unique keys for new records in your tables. Overcomes the potential problems with other methods.

➤ **TAWK**

Component from John Taylor which allows you to quickly scan and parse text files. In addition it provides a Like method which is

similar in function to the Like operator in Visual Basic.

➤ **TUTILITY**

TTUtility is a Delphi component that implements the functionality of Borland's TUTILITY.DLL, the same DLL that comes with Paradox for Windows. The primary purpose of this component is to give the Delphi or Paradox developer an easy to implement tool for validating and fixing corrupt Paradox tables from inside delivered applications. The DLL on which this component is based will work on Paradox tables up to Version 5. Includes a bonus component to check and regenerate out of date indexes.

➤ **USERGPS**

Details of Delphi User Groups around the world – don't forget to send in details of *your* group!.

Important Note!

Always, but ***always*** make a backup copy of your COMPLIB.DCL file (located in directory delphi\bin) *before* installing *any* new component into Delphi! Sometimes installing a component might trash your COMPLIB.DCL and you will then be left with an inoperative Delphi and (after copying the default file over from the distribution CD-ROM or floppies) will have to re-add *all* your favourite extra components. You have been warned!

Send In Your Code...

If you have some carefully crafted routines which you think may be of use to others, why not send them in by mail or (zipped) by CompuServe email (to 70630,717) so we can consider them for a future free disk?